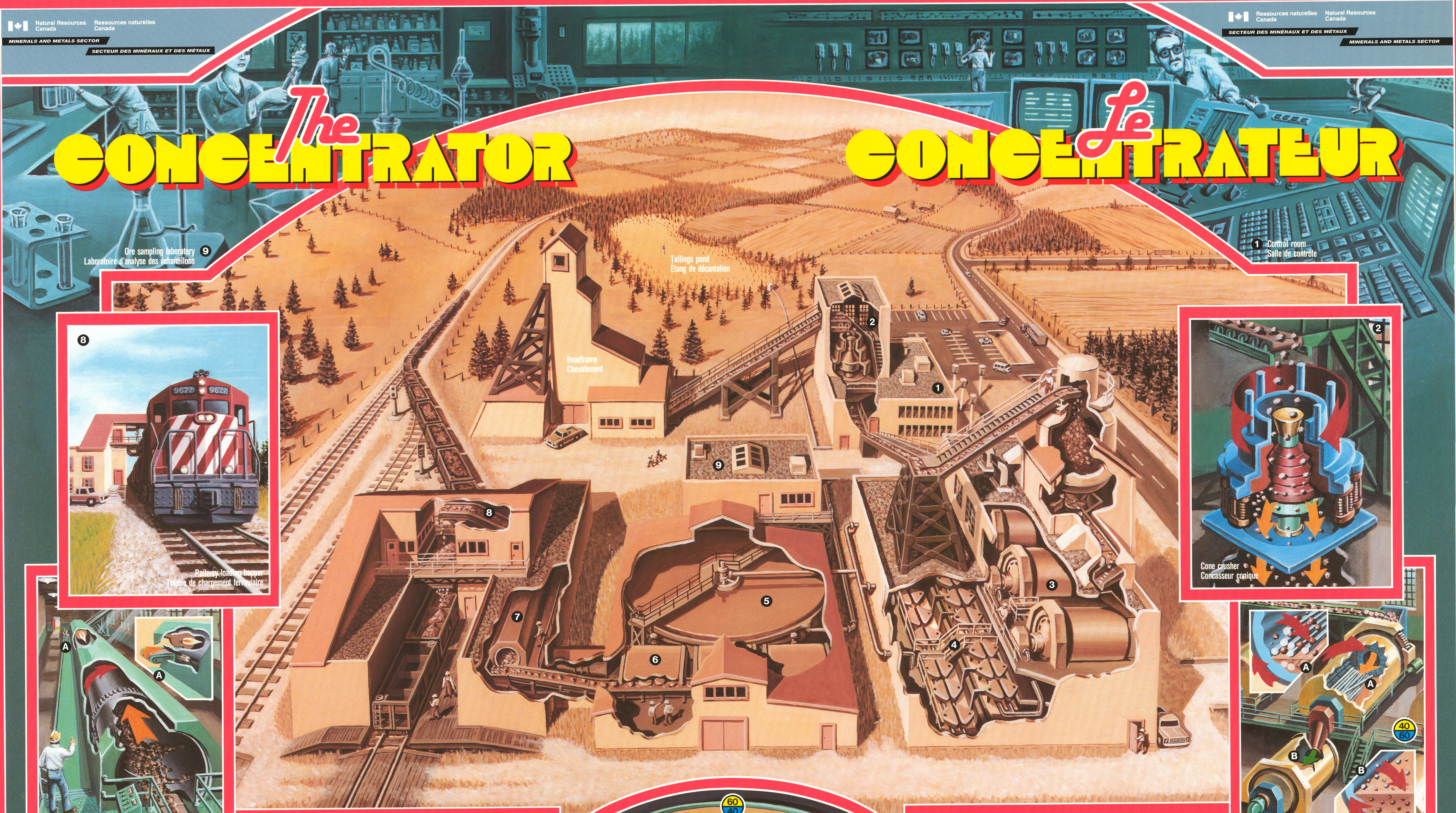


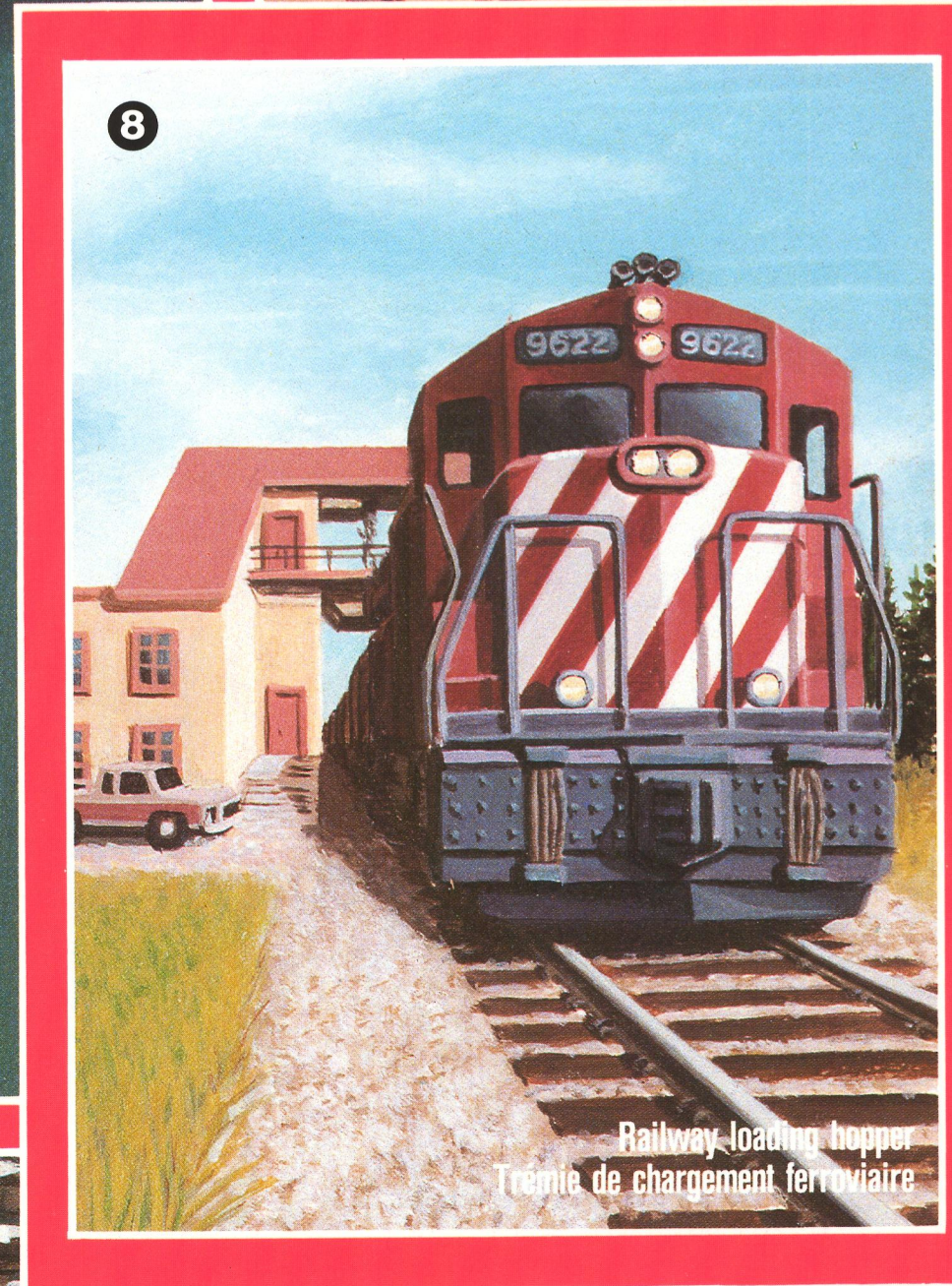
# The CONCENTRATOR

# Le CONCENTRATEUR

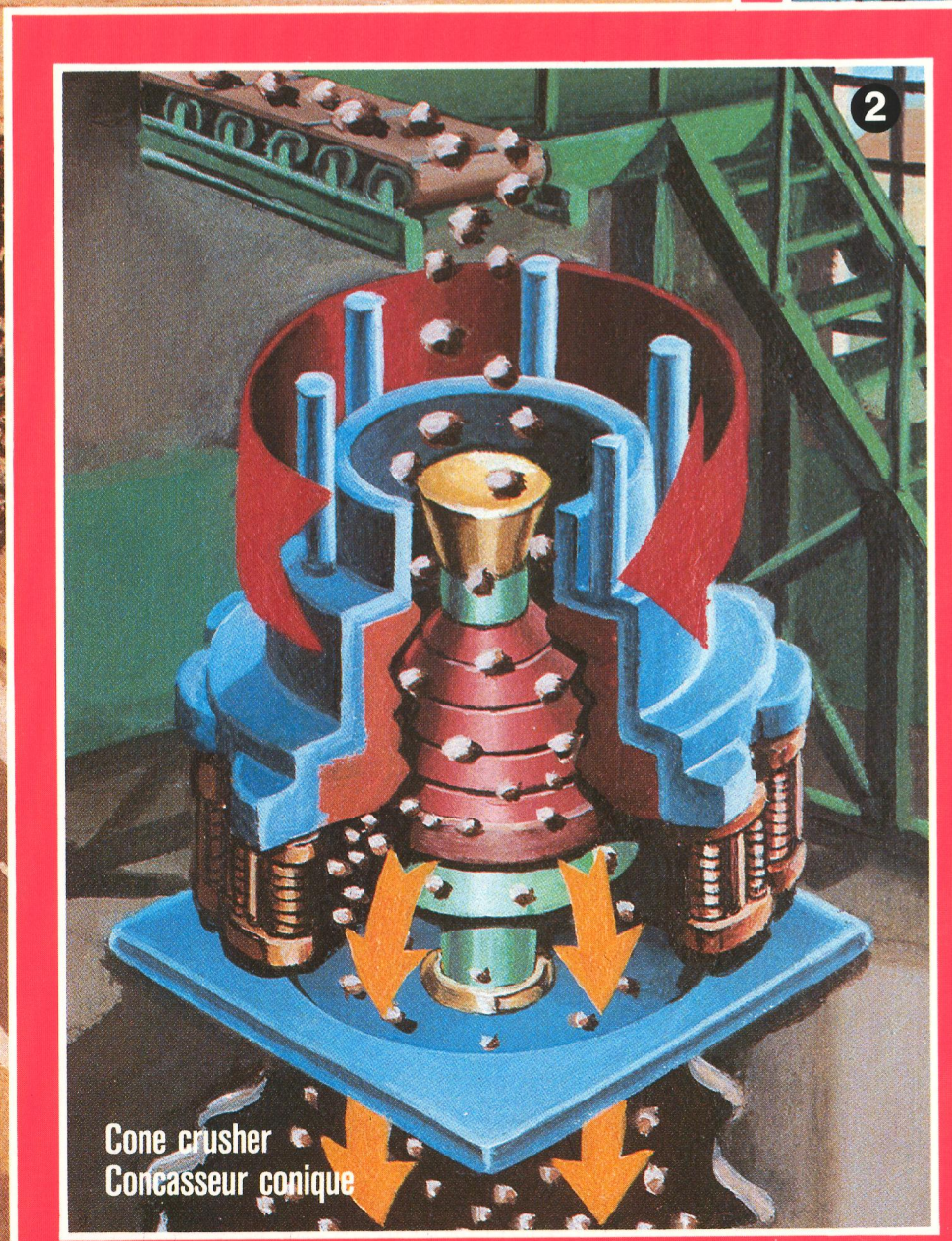


9 Ore sampling laboratory  
Laboratoire d'analyse des échantillons

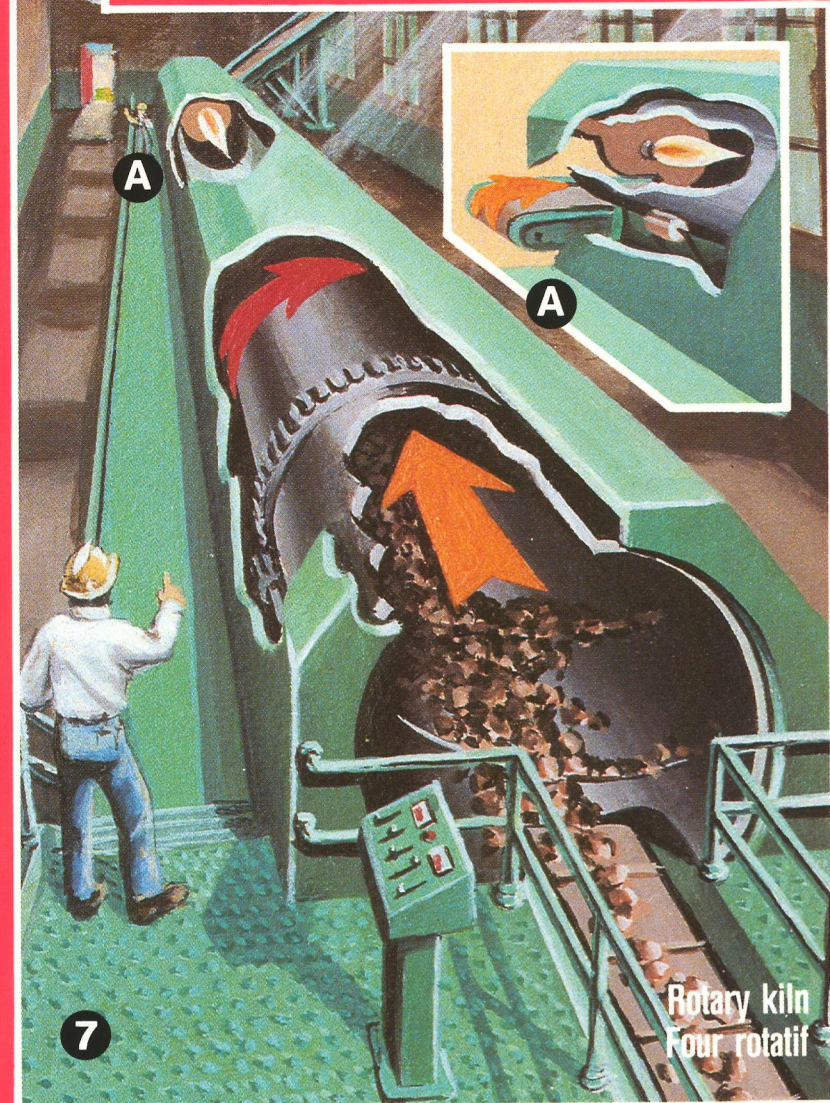
1 Control room  
Salle de contrôle



8 Railway loading hopper  
Tremie de chargement ferroviaire



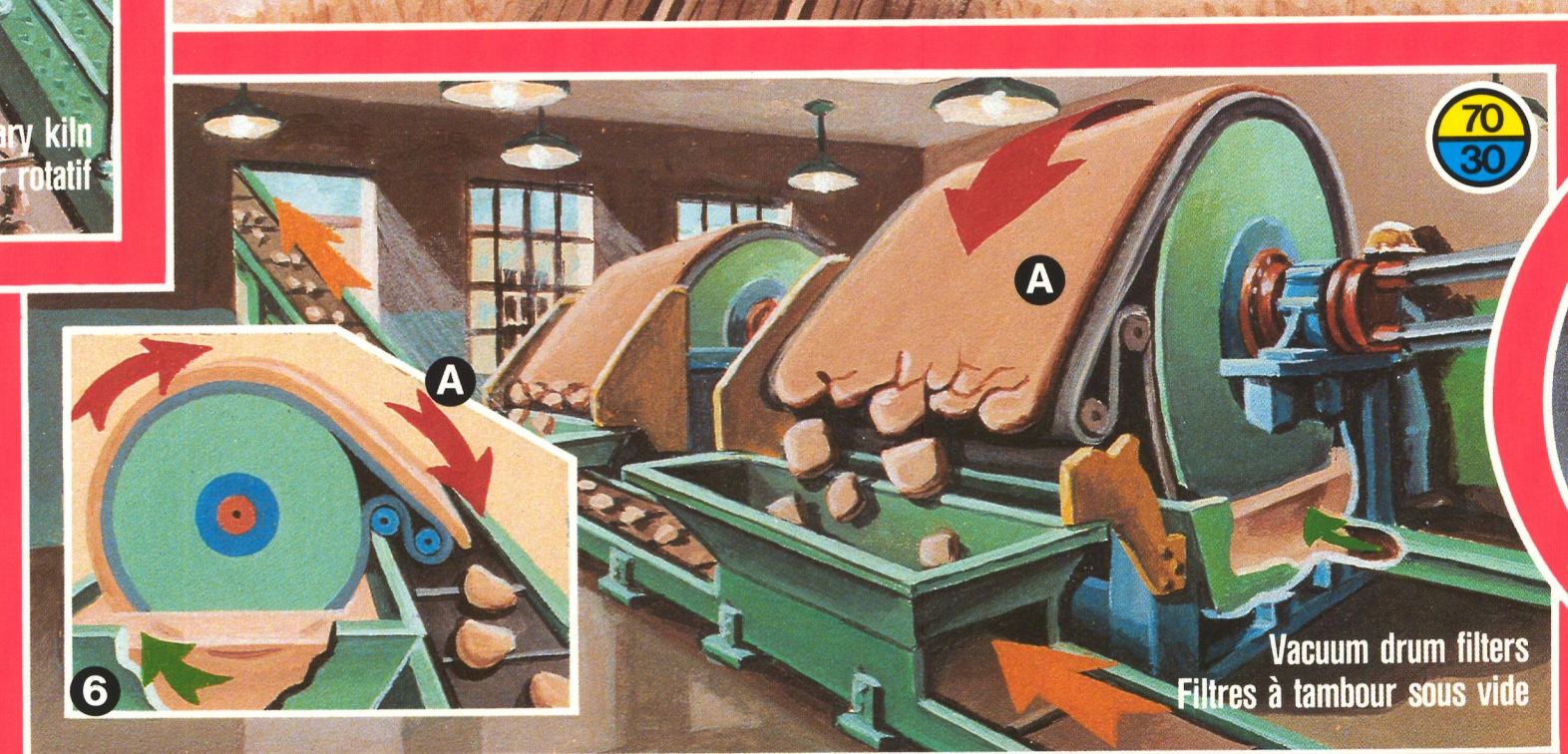
2 Cone crusher  
Concasseur conique



7 Rotary kiln  
Four rotatif



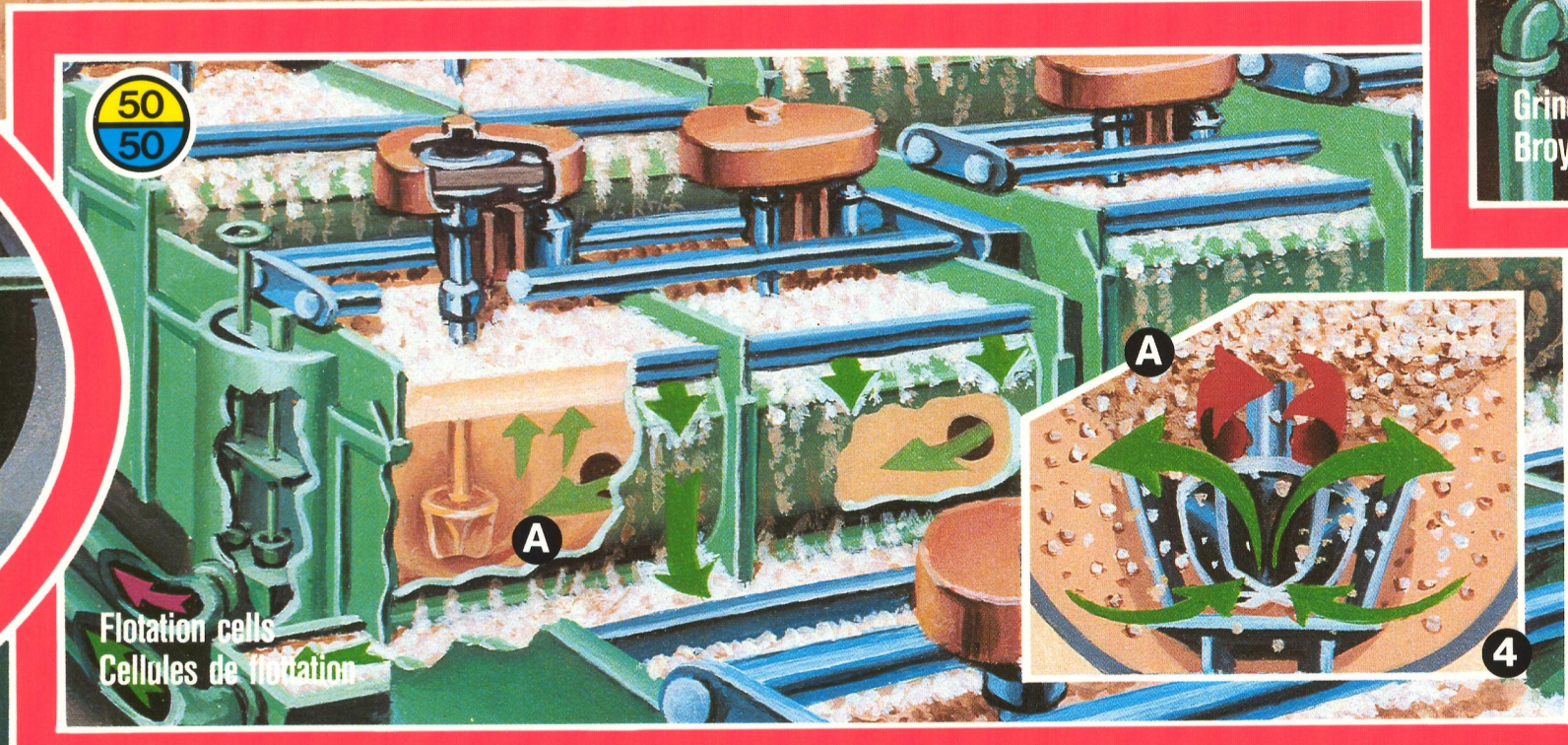
3 Grinder  
Broyeur



6 Vacuum drum filters  
Filtres à tambour sous vide



5 Thickener  
Épaisseur



4 Flotation cells  
Cellules de flottation

**LEGEND / LÉGENDE**

Liquid/solid ratio in percentages  
Proportion liquides/solides (%)

70/30

Direction / Direction  
Slurry / Boues

Tailings / Résidus  
Ore / Minerai

\*Minister of Supply and Services Canada 1986  
\*Ministère des Approvisionnements et Services Canada 1986  
Cat. No. IN/ de cat. M37-36/1987  
ISBN 0-662-55206-7

robin burgesse