

Fossils of Ontario

ONTARIO BENEATH YOUR FEET

TRACE FOSSILS

የሙሉ ስጦታ ላይ የሚገኙ የእንግዳሌ ምልክቶች



Time: Preserved evidence of animal or plant activities. 550 mya to present.

Description: Burrows, footprints, tracks, plant root networks (roots not preserved).

Examples: Burrows, footprints, tracks, plant root networks (roots not preserved).

ጊዜ: 550 ጊርኦን ርታሎን ድርጅት ለመገኘት ሚስት ሲሆን ለእርሱ ለገንጠል ለሚገኙት ምልክቶች ማለት ይቻላል።

BIVALVES - Pelecypods (Mollusc)

ለሁለት ስጦታ ያላቸው ማህረኮች (ግንኙኛ)



Time: 540 mya to present.

Description: Each has two shells (often symmetrical to each other), hinged together and held closed by strong muscles.

Life/Habitat: Filter feeder.

Modern Relatives: Modern clams, mussels, etc.

ጊዜ: 540 ጊርኦን ርታሎን ድርጅት ለመገኘት ሚስት ሲሆን ለእርሱ ለገንጠል ለሚገኙት ምልክቶች ማለት ይቻላል።

BRACHIOPODS

የጎረቤት ማህረኮች



Time: 540 mya to present.

Description: Two shells that are symmetrical along the center of each shell.

Life/Habitat: Filter feeder.

Modern Relatives: Brachiopods.

ጊዜ: 540 ጊርኦን ርታሎን ድርጅት ለመገኘት ሚስት ሲሆን ለእርሱ ለገንጠል ለሚገኙት ምልክቶች ማለት ይቻላል።

BRYOZOANS

የፍጥረት ማህረኮች



Time: Possibly 488 mya to present.

Description: Many different forms, including branching twig-like structures and lacy networks. Openings to individual chambers are smaller than those of corals.

Life/Habitat: Filter feeder.

Modern Relatives: Bryozoans.

ጊዜ: 448 ጊርኦን ርታሎን ድርጅት ለመገኘት ሚስት ሲሆን ለእርሱ ለገንጠል ለሚገኙት ምልክቶች ማለት ይቻላል።

CEPHALOPODS (Mollusc)

የራሽታ ማህረኮች (ጋርካኖ)



Time: 520 mya to present.

Description: Cone - or coil - shaped shell divided into chambers.

Life/Habitat: Predator or scavenger. Top predators in the Ordovician.

Modern Relatives: Nautilus, octopuses, squids and cuttlefish.

ጊዜ: 520 ጊርኦን ርታሎን ድርጅት ለመገኘት ሚስት ሲሆን ለእርሱ ለገንጠል ለሚገኙት ምልክቶች ማለት ይቻላል።

CRINOIDS

ክሪኖይድ



Time: 485 mya to present.

Description: Animals resembling flowers with a grouping of feathery arms at the top of a stem.

Life/Habitat: Filter feeder.

Modern Relatives: Sea lilies, starfish and sea urchins.

ጊዜ: 485 ጊርኦን ርታሎን ድርጅት ለመገኘት ሚስት ሲሆን ለእርሱ ለገንጠል ለሚገኙት ምልክቶች ማለት ይቻላል።

GASTROPODS (Mollusc)

የጎረቤት ማህረኮች (ጋርካኖ)



Time: 510 mya to present.

Description: Coiled shell houses the animal.

Life/Habitat: Filter feeder, algae eater or detritivore.

Modern Relatives: Snails and slugs.

ጊዜ: 510 ጊርኦን ርታሎን ድርጅት ለመገኘት ሚስት ሲሆን ለእርሱ ለገንጠል ለሚገኙት ምልክቶች ማለት ይቻላል።

RUGOSE CORALS

የጎረቤት ማህረኮች



Time: 462 mya to 251 mya.

Description: Hard cone shaped skeleton; the interior is divided by vertical walls.

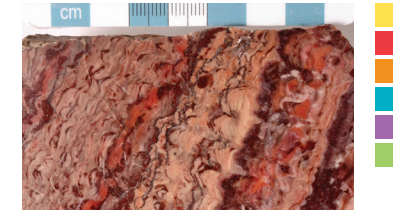
Life/Habitat: Filter feeder.

Modern Relatives: Corals.

ጊዜ: 462 ጊርኦን ርታሎን ድርጅት ለመገኘት ሚስት ሲሆን ለእርሱ ለገንጠል ለሚገኙት ምልክቶች ማለት ይቻላል።

STROMATOLITES

ካርቦኒፊት



Time: 3500 mya to present.

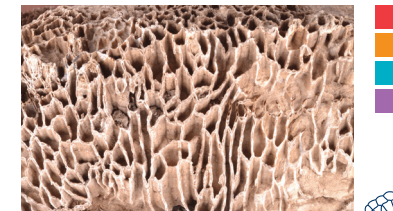
Description: Colonies of bacteria. They trap grains of sediment, forming layers and building mounds.

Modern Relatives: Stromatolites.

ጊዜ: 3500 ጊርኦን ርታሎን ድርጅት ለመገኘት ሚስት ሲሆን ለእርሱ ለገንጠል ለሚገኙት ምልክቶች ማለት ይቻላል።

TABULATE CORALS

የጎረቤት ማህረኮች



Time: 488 mya to 251 mya.

Description: A skeleton of vertical tubes further divided horizontally.

Life/Habitat: Filter feeder.

Modern Relatives: Corals.

ጊዜ: 488 ጊርኦን ርታሎን ድርጅት ለመገኘት ሚስት ሲሆን ለእርሱ ለገንጠል ለሚገኙት ምልክቶች ማለት ይቻላል።

TRILOBITES

የጎረቤት ማህረኮች



Time: 520 mya to 251 mya.

Description: Often have three distinct sections lengthwise and crosswise. Fossils found are often pieces of the external skeleton.

Life/Habitat: Burrower, detritivore, possibly predator and scavenger.

Modern Relatives: Horseshoe crabs, scorpions, spiders, etc.

ጊዜ: 520 ጊርኦን ርታሎን ድርጅት ለመገኘት ሚስት ሲሆን ለእርሱ ለገንጠል ለሚገኙት ምልክቶች ማለት ይቻላል።

LEGEND የሙሉ ስጦታ ላይ የሚገኙት ምልክቶች

Yellow	Mesozoic	ገብረኛ
Red	Devonian	በጎረቤት
Orange	Silurian	የራሽታ
Blue	Ordovician	የጎረቤት
Purple	Cambrian	የጎረቤት
Green	Precambrian	የጎረቤት

mya: million years ago ጊርኦን ርታሎን ድርጅት

